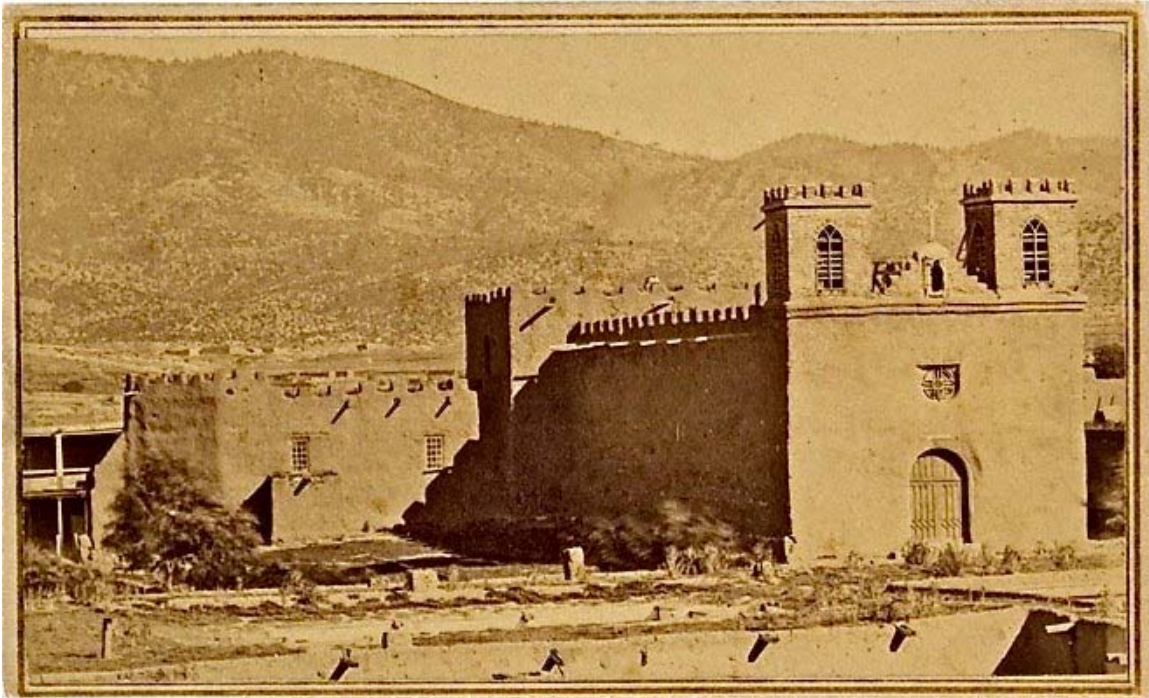


CATHEDRAL BASILICA OF SAINT FRANCIS OF ASSISI CONSTRUCTION 1869 – 1887

Saint Frances Cathedral was commissioned by Archbishop Jean Baptiste Lamy in the late 1860s. Work began in 1869 and the stonework was erected around the old Spanish parish church, La Parroquia, so that services could continue during the construction. When completed in 1887, La Parroquia was dismantled from the inside and the rubble was used on Santa Fe's streets.



La Parroquia, early to mid 1860s *Photographer unknown*

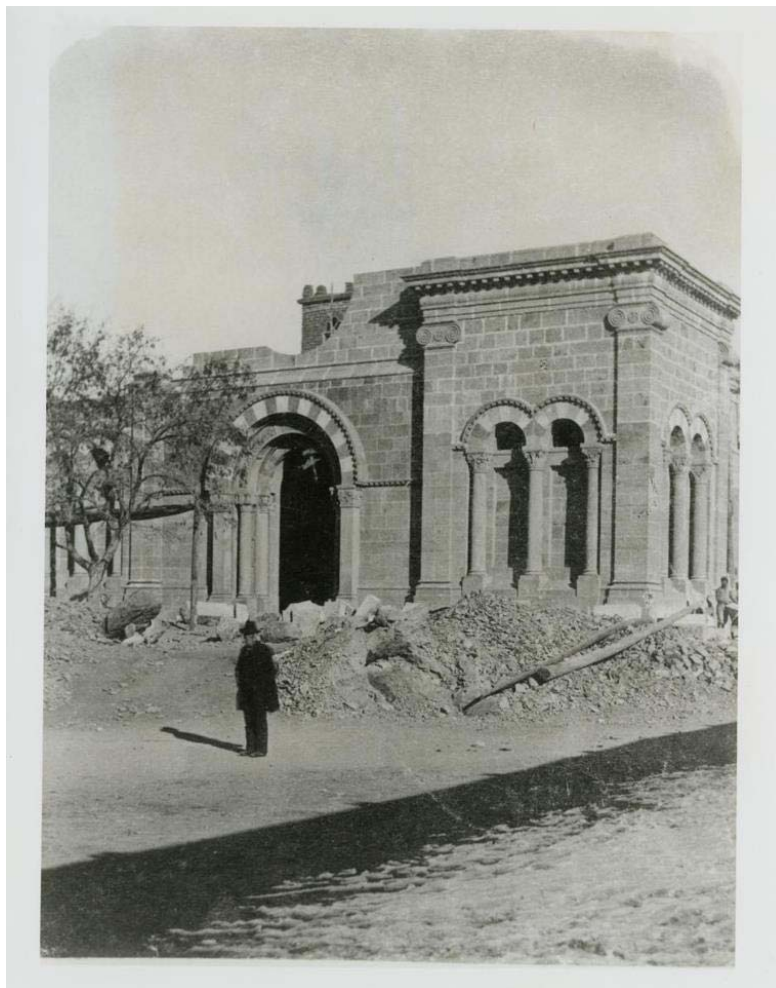


Beginning of construction, 1873 *Photographer – Timothy O'Sullivan*



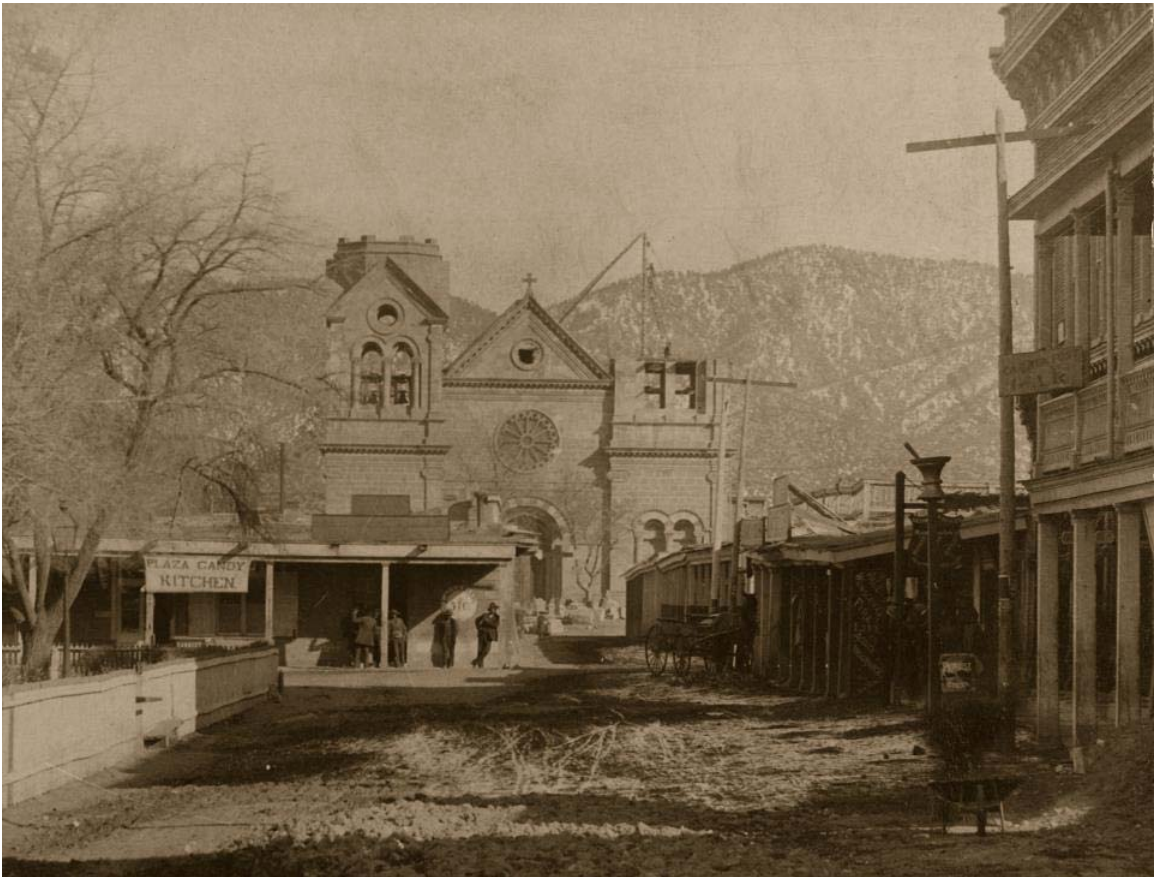
Construction continues, late 1870s

Photographer unknown



Construction, 1880

Photographer unknown



Construction almost complete, 1885

Photographer unknown



St. Francis Cathedral, 2004 Photo Courtesy of Wikipedia